



**Presented by: Longview Too AMBUCS**

**DATE:** SATURDAY, SEPTEMBER 26, 2015

**PLACE:** LEAR PARK (behind Longview Splash Pad)  
100 H G Mosley Pkwy, Longview, TX 75604

<https://www.google.com/maps/place/100+H+G+Mosley+Pkwy,+Longview,+TX+75604/@32.4936258,-94.7775142,810m/data=!3m1!1e3!4m2!3m1!1s0x863639077cf14b6b:0xf44d44ca87b57e56!6m1!1e1?hl=en>

**\*\*\*DIFFERENT LOCATION THAN LAST YEAR, YOU WILL CROSS OVER E HARRISON RD WHILE ON H G MOSLEY PKWY\*\*\***

**TOURNAMENT FORMAT:**

- 7:30 AM – PARKING LOT OPENS FOR PARTICIPANTS TO SETUP
- 8:00 – 8:30 AM – TEAM REGISTRATION & CHECK-IN
- 9:00 AM – GAMES WILL START

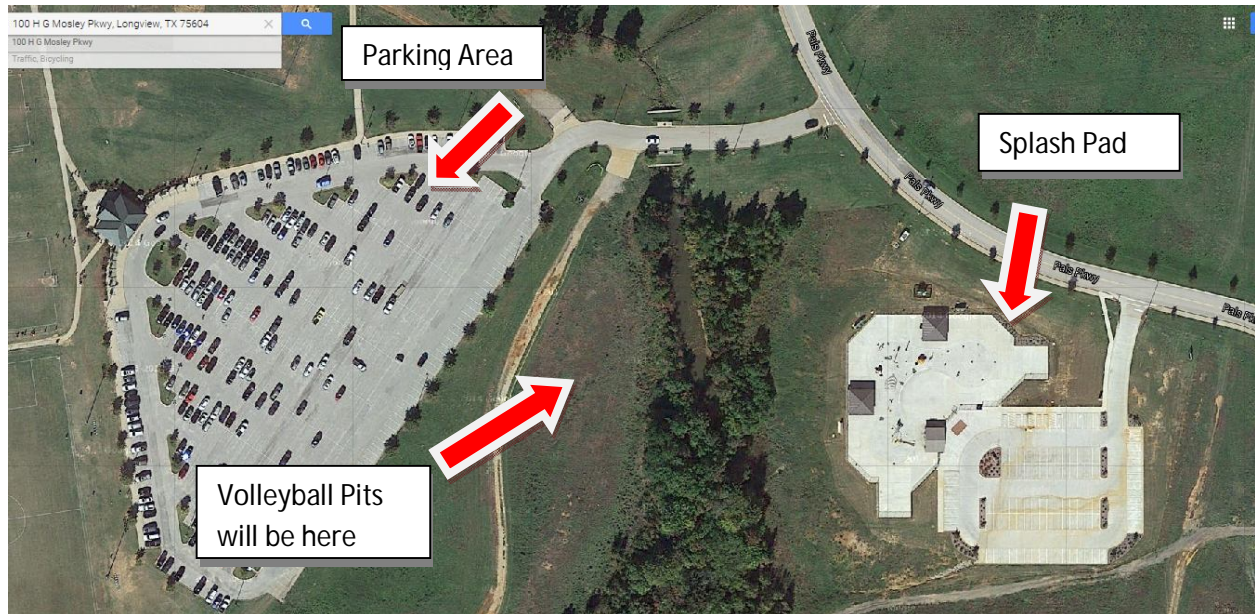
**\*\*\*REMEMBER ITS DOUBLE ELIMINATION TOURNAMENT, SO DON'T LEAVE\*\*\***

**MAJOR CHANGES:**

- ❖ **\*\*\*Must have 1 female in the Pits at all time for every team.\*\*\***

**PARKING:** 100 H G Mosley Pkwy, Longview, TX 75604 – Opens at 7:30 AM

**\*\*\*Parking Area will accept Donation for Parking\*\*\***



**CHECK – IN / REGISTRATION PROCESS:** 8:00 – 8:30 AM

- Once you have parked get your team together and head to the pits, there will be signs and Volunteers to help you to registration.
  - Team Captains, (Not the whole team), will hand in your teams registration Confirmation Receipt and any forms needed for your team.
  - Team Captains, (Not the whole team) will be given T-shirts bags
- All Participants will check-in with a volunteer at the gate.
  - If your Name is NOT already printed on the check-in list saying you have agreed to the participation waiver, you will be asked to fill out one at this time.
    - Once you have been checked-in and all forms are completed each player will get a wristband. **NOBODY WILL PLAY WITHOUT A WRISTBAND**
- Last Minute Registration will be taken care of at separate Check-In table.

### **TOURNAMENT DETAILS:**

- 1<sup>ST</sup> PLACE - \$500
- 2<sup>ND</sup> PLACE - \$400
- 3<sup>RD</sup> PLACE - \$300
- 4<sup>TH</sup> PLACE - \$200
- TEAM PHOTO: taken before and after first game played

## **DON'T FORGET TO BRING:**

- **TEAM REGISTRATION RECEIPT** (Team Captain will have)
- **Tennis Shoes/Water Shoes** to put on your feet while in the pits (Or go shoeless but at your own risk)
- **Duck Taped** to put on your feet or shoes (We will have Duck Tape for \$10 a roll)
- **Flip Flops** To walk around in while not playing
- **Cash** (for the concession stand \*\*\*Food & Drinks \*\*\* – remember proceeds will go to renovations at Universal Handicap Park & Amtrykes)
- **Lawn Chairs!!!** To sit back and relax and watch the games
- **Towels** Help dry off after games and/or your last game
- **Change of Clothing** You don't want to get your Car/Truck dirty, after all you'll be in mud
- **Sunscreen & Mosquito Spray!!!** Don't want to get burnt and bitten
- **Camera** To Capture and remember the fun
- **Invite your family and friends to come watch!!!** It's free to watch – Donation are welcomed

## **LEAVE IT AT HOME OR IN THE CAR:**

- **COOLERS**
- **No Pets** (don't leave them in your car PLEASE! Leave them at home)
- **ALCOHOL** (This is a City Park – which prohibits alcohol)
- **Outside food, grills or drinks** after all this is a charity event
- **Any breakables items** Some people will be barefooted
- **Valuables** like jewelry because once it goes into the pit good luck trying to find it

**THANK YOU FOR YOUR PARTICIPATION & ASSISTANCE IN MAKING THIS EVENT POSSIBLE! WHILE YOU'RE THERE, PLEASE DO NOT FORGET TO THANK ALL OF OUR VOLUNTEERS & SPONSORS!**

## **GENERAL VOLLEYBALL RULES APPLY:**

- We provide the referees for each game.
- Scoring: ONLY the Serving team will receive points. A team will keep the serve for as long as they continue to win points. Once point is lost the other team will then serve.
- Player rotate Clockwise at Serve
- Your Substitutions come in at the first spots after the server.
- Ball may be played by any part of the body as long as it is not held or thrown (MUST BE HIT).
- One Person cannot hit the ball two times in a row – but the team can volley the ball up to 5 times as needed (Just not the same person in a row)
- Net Violations will be called.
- Position of teams in water will be 3 in the front and 3 in the back.
- Once the ball hits the water or the dirt it is a dead ball.

## **RULES SPECIFIC TO LONGVIEW TOO AMBUCS:**

- **\*\*\*NO PROFANITY\*\*\***
- Co-ed teams are required -- **\*\*\*MUST HAVE 1 FEMALE IN THE PIT AT ALL TIMES\*\*\***
- Before each game – the two team Captains will meet for a coin flip (Call heads or tails), Winner will decide either which side they want or to server first.
- Maximum of 8 players on team **\*\*\* NO PULLING PLAYER FROM OTHER TEAMS UNLESS APPROVED TO REPLACE FOR INJURIES ONLY AND APPROVED BY OFFICIALS\*\*\***
- Teams must be ready to play at all times, if your team is not ready to play when your game is set to start you have 5 minutes to get in the pits, if your don't make it in the pits within the 5 minutes, you will forfeit that game
- Tournament is a Double Elimination (if you lose twice you're out, including an forfeits)
- First team to 21 wins the game – MUST WIN BY 2 POINTS – so games could go past 21 points
- Teams will switch sides once score reach 11 points (same team will continue to serve after switching)
- 6 players in the Pit at all times – Everyone must rotate **\*\*\*Must rotate each time you receive the ball back to serve from opposite team\*\*\***
- Serve from behind the backcourt line unless both teams agree that a particular player can move forward (like a young teenager) or a particular spot is unusually deep/unplayable.
- There are no sideline markings in order to avoid tripping over ropes.
- Referee calls are final.
- Two Game Elimination

**\*\*\*IF YOUR TEAM DOES NOT COMPLY WITH THE RULES – THE TEAM WILL RECEIVE A WARNING. AFTER THE THIRD WARNING YOUR TEAM WILL TAKE THAT GAME AS A LOSS (BASICALLY 3 STRIKES AND YOUR OUT). \*\*\***